

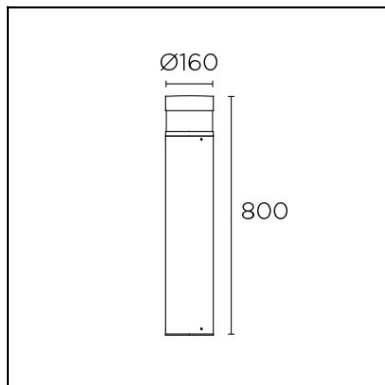
# LEDS C4

## NEWTON LED

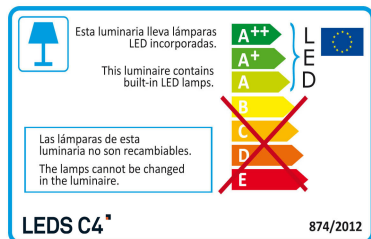
### 55-9791-Z5-CLV1



The photograph may not match the reference exactly. Please read the product description to identify the finish.



[Download photometric file .ldt /.ies](#)



[Click on image to download energy label](#)

#### TECHNICAL CHARACTERISTICS

Type:	Beacon
IP Protection degrees:	IP65
Light source 1: Bulb specified at the product label	48 x LED 12.7 Warm White - 3000K 1361 lm <sup>(N)</sup> CRI 80
IK Protection degrees:	IK08
Total power consumption (W):	13.9 W
Angle of the optics / Reflector:	
Voltage / Frequency:	100-240VAC/50-60Hz
Warranty:	2
Option to extend the guarantee:	5
Units per box:	2
Net Weight (Kg):	4.350
EAN Code:	8435381459017
Stability:	>15°



#### MATERIALS / FINISHES

**Structure material:** High purity aluminium

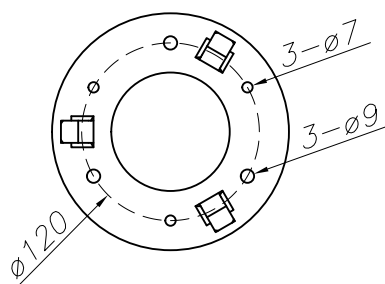
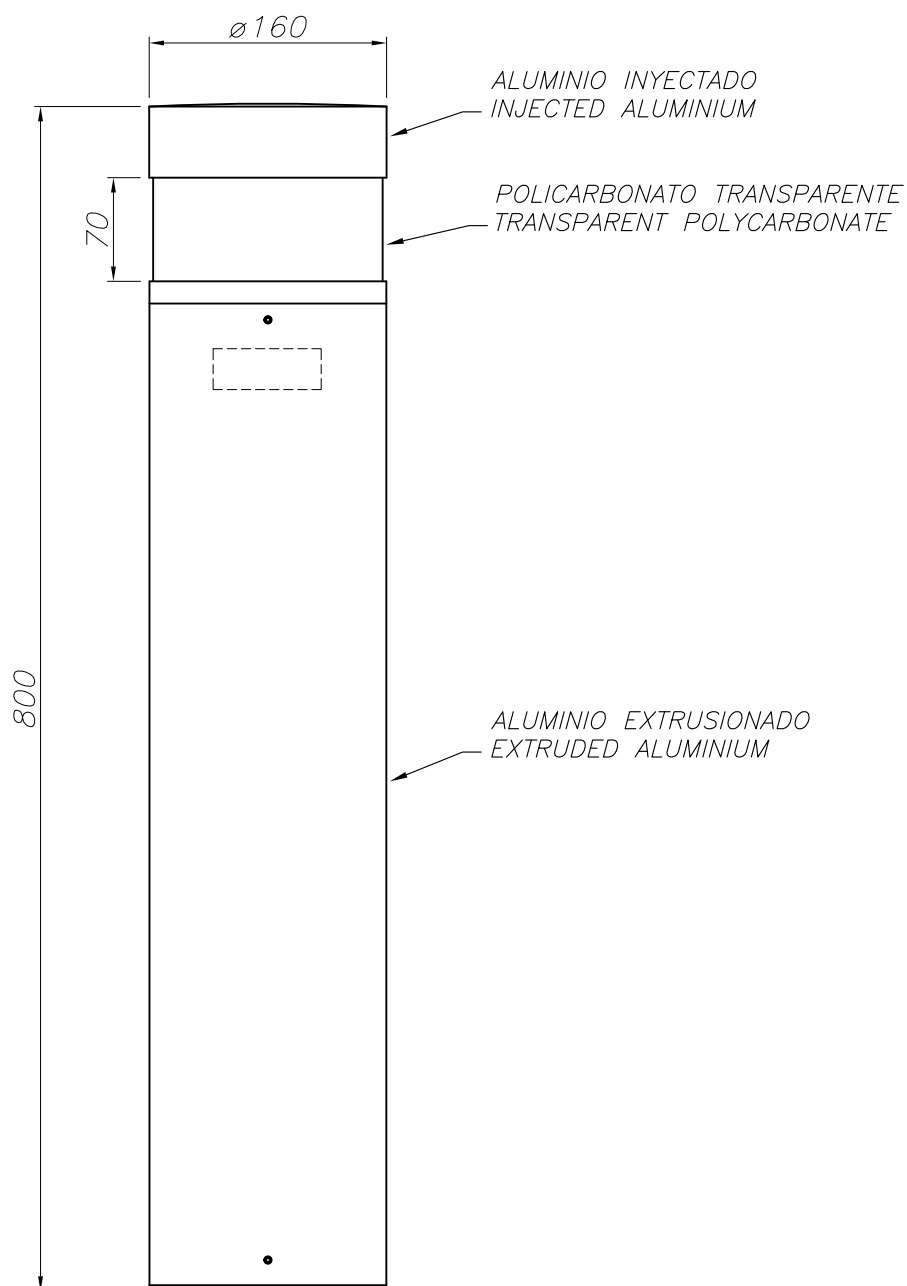
**Structure finish:** Urban grey

**Diffuser material:** Polycarbonate

**Diffuser finish:** Transparent  
Matt

#### GEAR

Multi-voltage electronic gear included (Yes)



PLANTILLA DE INSTALACIÓN  
INSTALLATION TEMPLATE

