

LED Linear Trunking System

160LM/W

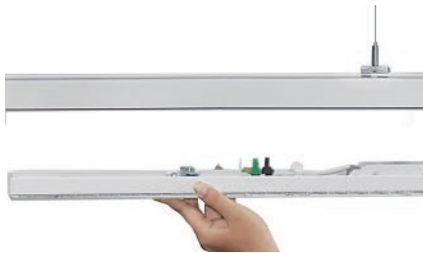
• Specification



LED Linear Trunking System

1 • Features

1 - Fast installation 43 seconds



2 - Owned Lens Design



- no gap
- PMMA

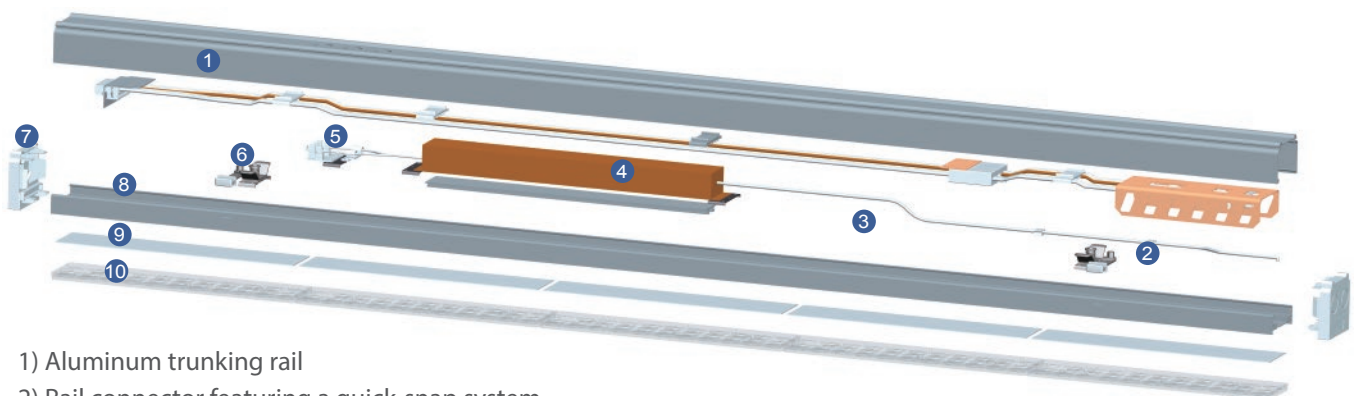
3 - Power Turnable

- Tridonic: 60W/55W/50W/45W/42W
- Osram: 60W/50W/42W/32W
- AGT: 60W/64W/68W/72W

4 - Can be linkable



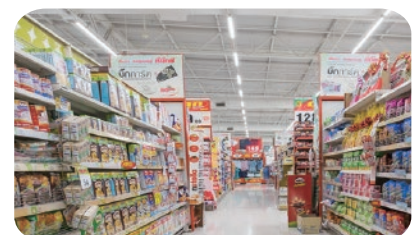
2 • Explosion Drawing



- 1) Aluminum trunking rail
- 2) Rail connector featuring a quick-snap system
- 3) Harness with 2.5mm² wires
- 4) Driver
- 5) 5 to 11 Pin connector
- 6) Quick connectors
- 7) End cap
- 8) Aluminum profile
- 9) SMD2835 and PCB
- 10) Cover or Lens

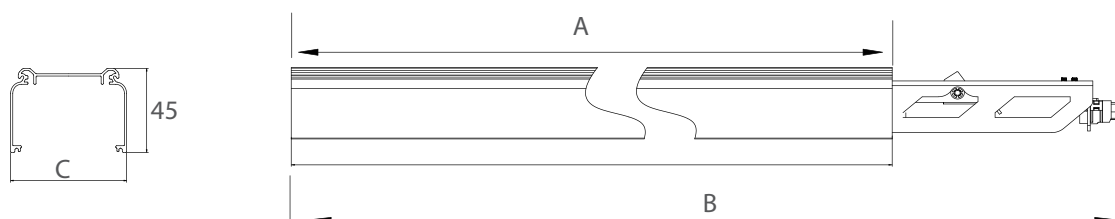
3 • Application

Conference rooms, Exhibition & showrooms, Entrance & reception areas, Factories and warehouses



4 • Trunking

• Dimension (mm)

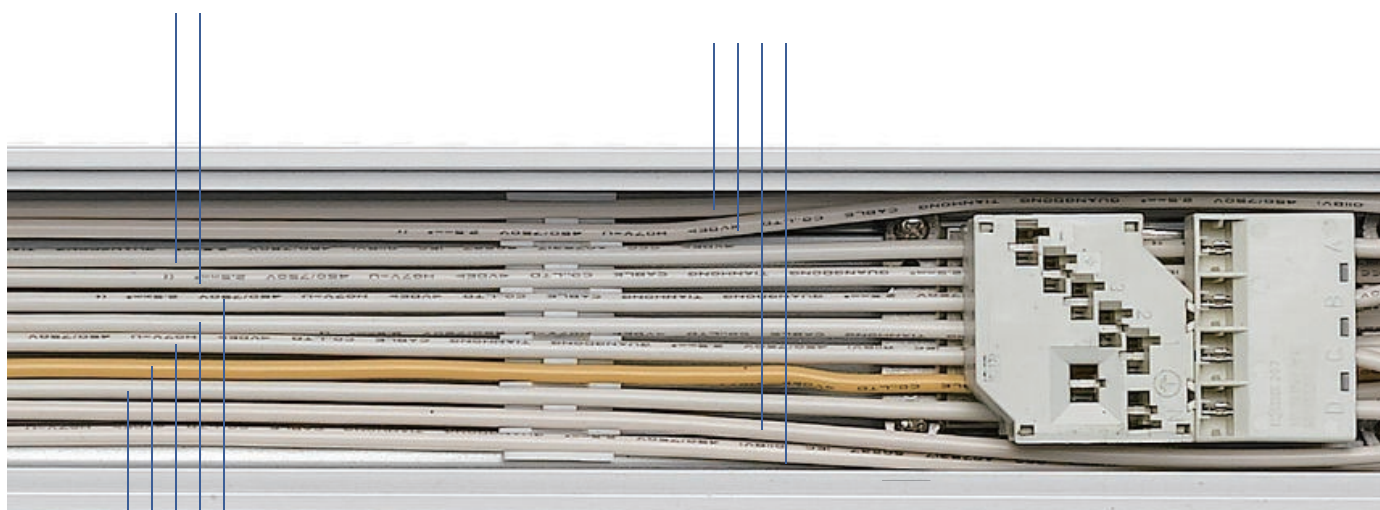


Model NO.	Size A(mm)	Size B(mm)	Size C(mm)
L012	578	84	64.5
L014	1150	84	64.5
L015	1437	84	64.5
L019	2874	84	64.5

• Wiring system

2 cables for dimming
(2 x 2.5 mm²)

4 cables for emergency lighting circuits
(4 x 2.5 mm²)



5 cables for power supply (5 x 2.5 mm²)
• L1, L2, L3, N, FG



5 Wire: L1, L2, L3, N, FG

7 Wire: L1, L2, L3, N, FG + DIM+, DIM-

11 Wire: L1, L2, L3, N, FG + DIM+, DIM-
+ 4 wires for Emergency converter & Battery



• Trunking Datasheet

Length	Model No.	Wires	Function	Discription	Picture
578mm	TKA2-05W	5 wires	Non-Dimming	5 x 2.5 mm ² cable pre-wired	 
	TKA2-07W	7 wires	1-10V /Dali	7 x 2.5 mm ² cable pre-wired	
	TKA2-11W	11 wires	Emergency	11 x 2.5 mm ² cable pre-wired	
1437mm	TKA5-05W	5 wires	Non-Dimming	5 x 2.5 mm ² cable pre-wired	
	TKA5-07W	7 wires	1-10V /Dali	7 x 2.5 mm ² cable pre-wired	
	TKA5-11W	11 wires	Emergency	11 x 2.5 mm ² cable pre-wired	
2874mm	TKA9-05W	5 wires	Non-Dimming	5 x 2.5 mm ² cable pre-wired	
	TKA9-07W	7 wires	1-10V /Dali	7 x 2.5 mm ² cable pre-wired	
	TKA9-11W	11 wires	Emergency	11 x 2.5 mm ² cable pre-wired	

5 • Led Module



Wire connector plug



3 Pin wire connector plug:
For 5 wiring trunking rail

- * Green: FG
- * Blue: N
- * Black: L1, L2, L3 phase selection knob



5 Pin wire connector plug:
For 7 wiring trunking rail

- * Green: FG
- * Blue: N
- * Red/White: D+/D-, DIM+/DIM-
- * Black: L1, L2, L3 phase selection knob



9 Pin wire connector plug:
For 11 wiring trunking rail

- * D+/D-: Dimming driver
- * A/B/C/D: Emergency driver and battery
- * L: L1, L2, L3 phase selection knob

. Led Module Datasheet

.Osram Driver

Length	Product Code	Power	Lumen	LM/W	Input Voltage	PF/THD	CCT	IP	Function
1437mm	RSL-65-S1	60W can adjust 50w/42w/32w	MAX 9000LM	150Lm/W	AC 220-240V	PF>0.9 5/THD<15%	3000-6500K	IP40	NO-Dimming
1437mm	RSL-60-S4	60W	Max 9000LM	150Lm/W	AC/DC 220-240V	PF>0.9 5/THD<15%	3000-6500K	IP40	DALI

Tridonic Driver

Length	Product Code	Power	Lumen	LM/W	Input Voltage	PF/THD	CCT	IP	Function
1437mm	RSL-71-T1	60W can adjust 55w/50w//42W	MAX 9000LM	150Lm/W	AC/DC 220-240V	PF>0.9 5/THD<15%	3000-6500K	IP40	NO-Dimming

ENEC Driver

Length	Product Code	Power	Lumen	LM/W	Input Voltage	PF/THD	CCT	IP	Function
1437mm	RSL-72-A3	72W can adjust 68W/64W/60W	MAX 9300LM	130Lm/W	AC /DC 220-240V	PF>0.9 5/THD<15%	3000-6500K	IP40	1-10V
1437mm	RSL-42-A3	42W can adjust 38W/35W/32W	Max 5600LM	140Lm/W	AC /DC 220-240V	PF>0.9 5/THD<15%	3000-6500K	IP40	1-10V
1437mm	RSL-72-B4	48-72W	MAX 9300LM	130Lm/W	AC/DC 220-240V	PF>0.9 5/THD<15%	3000-6500K	IP40	DALI

• Beam Angle



30°



60°



90°



120°



Asymmetric-R



Asymmetric-L



25° Double

• Other Datasheet

. Aluminum +PC/PMMA
. L70B50 @Ta 25 °C : 80000h

. White Frame
. 5 years warranty

. Operation : -15°C~+50°C
. Storage: -25°C~+55°C


. Microwave Sensor
. SMD2835 RA>80

• Maximum loading of automatic circuit breakers


Automatic circuit breaker type	C10	C13	C16	C20	B10	B13	B16	B20	Inrush current
Installation	1.5 mm ²	1.5 mm ²	1.5 mm ²	2.5 mm ²	1.5 mm ²	1.5 mm ²	1.5 mm ²	2.5 mm ²	I _{max} Time
Tridonic 71W	21	28	36	46	13	17	22	28	33 A 250 μs
OSRAM 65W					8		13		40 A 200 μs
OSRAM 60W					8		13		53 A 300 μs

6• Accessory part

• Track Rail Module

Length	Model No.	Track Rail Length	Picture
578mm	TR-06-05	578mm 5 wires	
	TR-06-07	578mm 7 wires	
1437mm	TR-15-05	1437m 5 wires	
	TR-15-07	1437mm 7 wires	

• COVER

Length	Model No.	Description	Picture
578mm	RE-06-FF	578mm / PC metrial	
	RE-06-AL	578mm / Aluminum	
1437mm	RE-15-FF	1437mm / PC metrial	
	RE-15-AL	1437mm / Aluminum	

• Node connection



Model: TNC-B0-00W

Feed End Box



Model: TNC-B1-05W

Feed IN Box



L Node connectors:



T Node connectors



X Node connectors

• Installation Kits



surface ceiling fixing



Steel cable suspension kits



Chain suspension kits



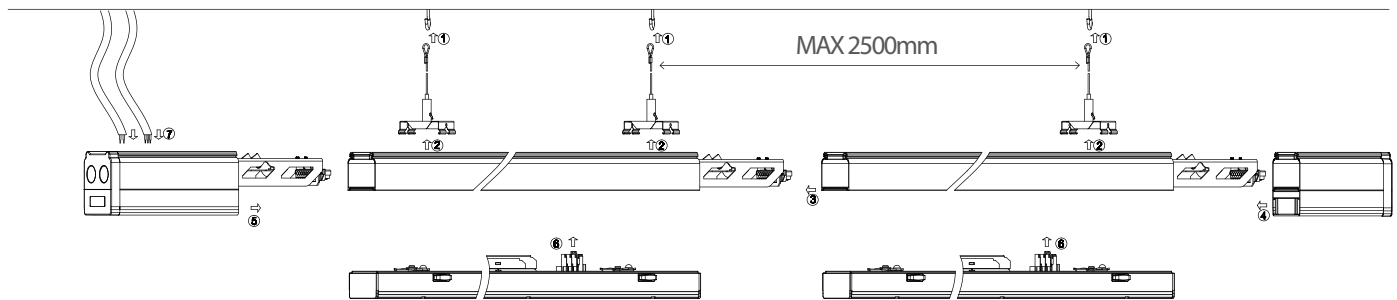
Feed In Connector



cap

7• Installation

.Suspending



- 1) Drill holes in the ceiling, install the hooks and place the hanging cord on the hooks
- 2) Connect the trunking rail to the mounting clamps
- 3) Add the next rail and secure it using the quick-snap lever
- 4) Install the Feed-out-element and secure it in the same way
- 5) Install the Feed-in-element and secure it in the same way
- 6) Connect the LED Module with the rails
- 7) Connect the wires in the Feed-in-element

■ How many LED fixtures we could connect on one line

Input Voltage	Max Qty	Input Voltage	Max Qty
230VAC/32W	92	230VAC/56W	52
230VAC/35W	84	230VAC/60W	49
230VAC/38W	77	230VAC/64W	46
230VAC/42W	70	230VAC/68W	43
230VAC/50W	58	230VAC/72W	40

• Maintenance

- To avoid injuries, disconnect power to the trunking rail and allow the unit to cool down before performing maintenance.
- Perform visual, mechanical and electrical inspections on a regular basis. We recommend routine checks to be made on an annual basis. Frequency of use and environment should determine this.
- The lens or covers should be cleaned periodically as needed to ensure continued photometric performance. Clean the lens with a damp, non-abrasive, lint-free cloth. If not sufficient, use mild soap or a liquid cleaner. Do not use an abrasive, strong alkaline or acid cleaner as damage may occur.
- Inspect the topside on the luminaire to ensure that it is free of any obstructions or contamination (i.e.excessive dust build-up). Clean with a non-abrasive cloth if needed



• Safety notes and Warning:

- Carefully read and follow all warnings and instructions before installing or maintaining the luminaire.
- The installation and connection of the luminaire must be done when switched off and by qualified people.

8• Package

Product	Length	Outer Carton	Qty/Carton	Unit N.W	G.W/Carton
Trunking	1437mm	1630 x 375 x 210mm	8Pcs	1.5kg	16.0 Kg
Trunking	2874mm	3060 x 375 x 210mm	8Pcs	3.0kg	26.0Kg
Led Module	1437mm	1500x 290 x 220mm	8Pcs	1.7kg	14.0Kg

