

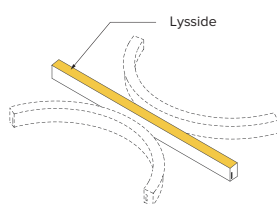
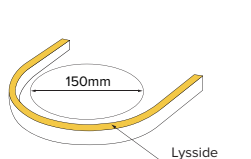
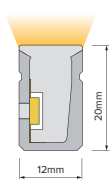
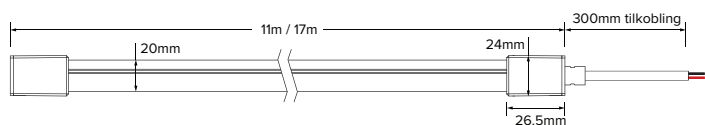
Neon Flex Pro Side view



Lyskilde	LED
Effekt	10W / 11W pr. m (RGB)
Fargetemperatur	2700K / 3000 / 4000K / RGB
Ra-index	> 90
Lumen	300lm / 310lm / 335lm (LM/m)
Driftspenning	24V
Beskyttelsesgrad	IP67
McAdams	< 3
Farger	Hvit
Dimbar	DALI eller Triac
Forventet levetid	50.000 timer
Lengder	17 meter og 13 meter (RGB) 30cm tilkobling



- Høy lystransmisjon, miljøbeskyttende silikonmateriale, integret ekstruderingsprosess.
- Unikt design av optisk lysfordelingsstruktur, jevn belysningsflate og ingen skygge.
- IP67 beskyttelsesnivå.
- Utmerket fleksibilitet, enkelt og stilig utseende, delikat og unik



Monteringsanvisning neste side >>>

Vare nr.	Fargetemp	Lumen	Lengde
NF-09-8027-20-927-10-180	2700K	300lm	17 m
NF-09-8028-20-930-10-180	3000K	310lm	17 m
NF-09-8029-20-940-10-180	4000K	335lm	17 m
NF-09-8030-20-RGB-10-180	RGB		13 m

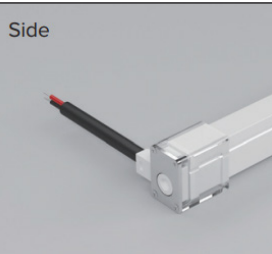
Tilbehør varenr..

- AC-NF Side View 2pin Conector Cable 3m (NB: Inntil 100w driver)
- AC-NF Side View 4pin RGB Conector Cable 3m (NB: Inntil 100w driver)
- AC-NF Side View End Cap
- AC-NF Side View Mount Clips Alu
- AC-NF Side View Mount Track 1m Alu
- AC-NF Side View bottom Conector Cable 3m
- AC-NF Side View side Conector Cable 3m
- AC-NF Cutting Tool

Side Mount Clips Alu

Side-Side Connector Cable

Side- Bottom Connector Cable



Monteringsløsninger



Moterings klips i Alu
20x17.2x21mm(L x W x H)

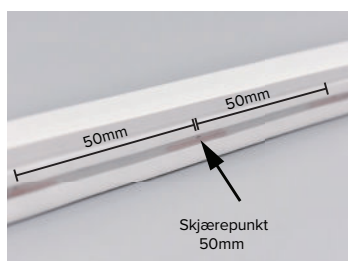


Side View Track Alu
1000x17.2x21mm(L x W x H)



Pendel feste

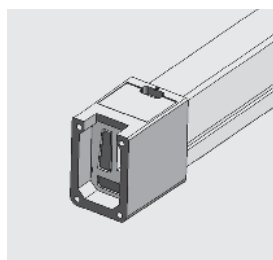
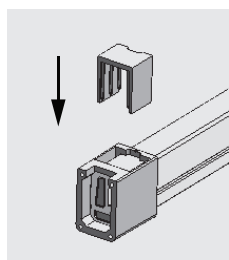
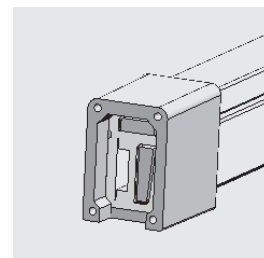
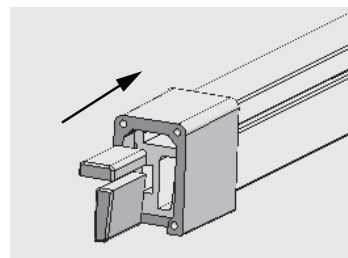
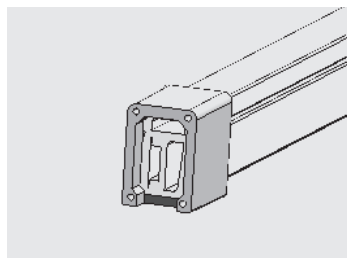
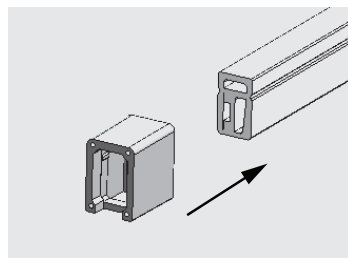
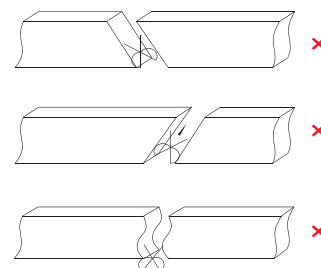
Installasjonsanvisning av endestykket



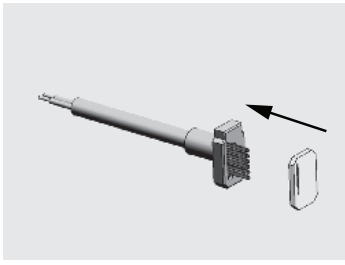
NB: Bunnen av ledestripen har et gjennomsiktig vindu, den svarte markøren er skjærepunktet.



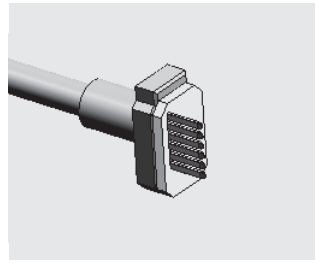
Bruk en neon flex saks for et nøyaktig kutt.



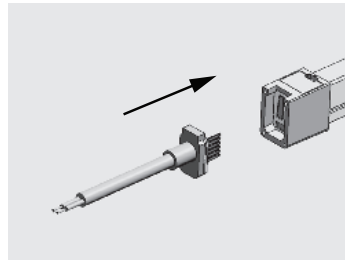
Monteringsanvisning av strømkabel



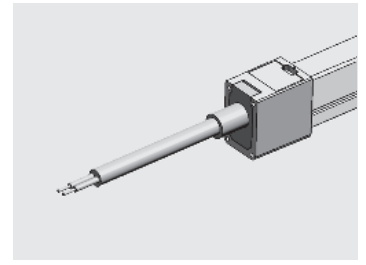
Sett den vanntette pakningen inn i pluggen



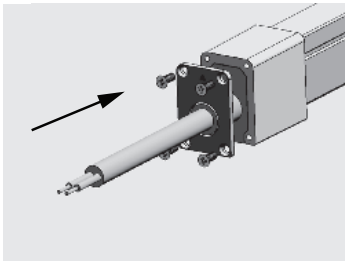
Ferdig koblet med pakning



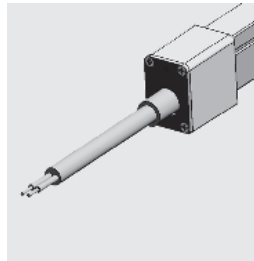
Sett pluggen med den vanntette pakningen inn i ledstripen, og "Pin"-innsatsen mellom FPC og gjennomsiktig PET.



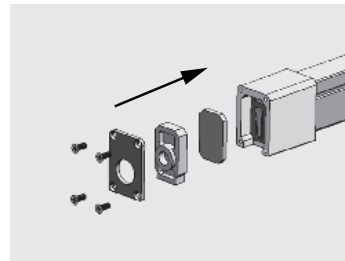
Pluggen ferdig montert



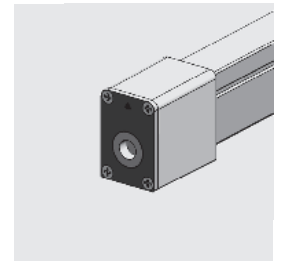
Fest braketten på PC-skallet med 4 stk skruer, på PC-skallet.



Ferdig montert.



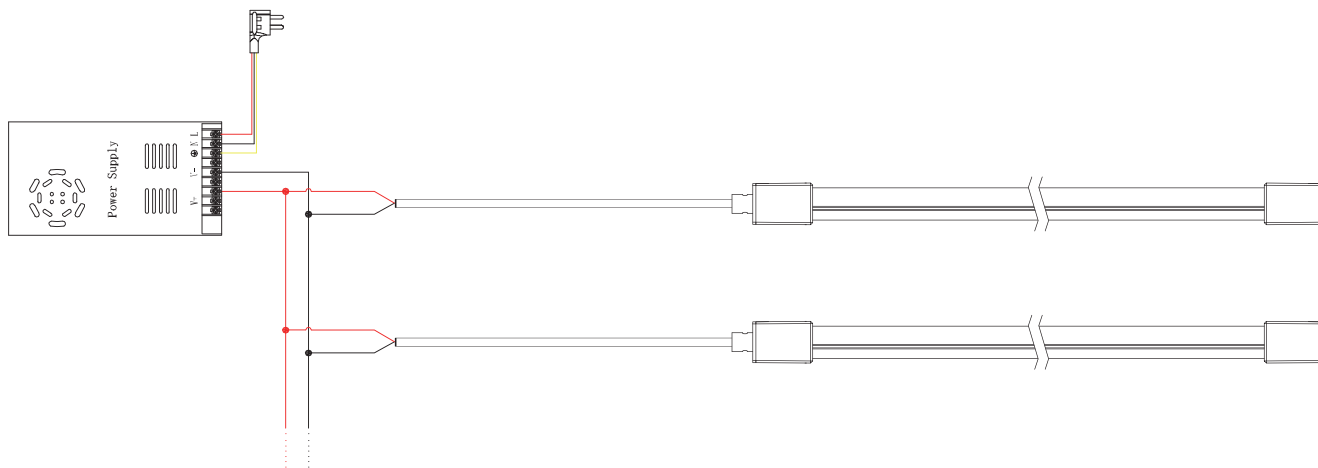
Endestykke diagram



Ferdig montert med endestykke og brakett



Enkelt tilkoblingskjema



RGB monterings Diagram

